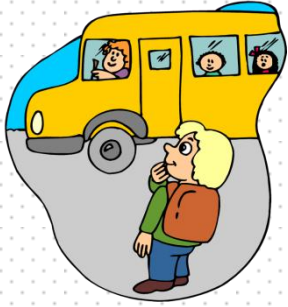


SAVE THE WORLD



Look at the pictures, read the sentences and fill in the blanks with "should" or "shouldn't"



We ___ use public transportation more.



We ___ use environment friendly deodorants.



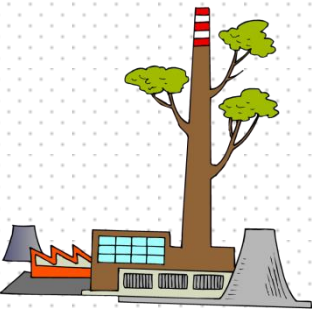
We ___ cut down the trees. We ___ save them.



We ___ love animals. They are our real friends.



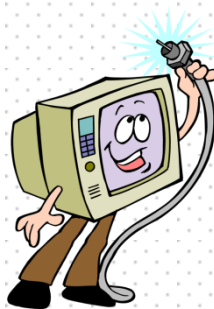
We ___ use coal in houses. It pollutes air very much.



We ___ use filters in factories. We ___ pollute the air.



We ___ hunt animals. We ___ save them. They are our friends.



We ___ turn off electric devices when we don't use them.



We ___ use our private cars. Because they pollute air much.



We ___ pour chemicals into our sinks. They pollute water.



We ___ use solar energy more. It's clean and harmless.



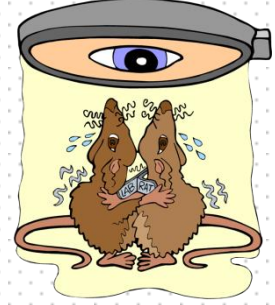
We ___ use environment friendly detergents.



We ___ waste paper to save our trees. We ___ recycle them.



We ___ turn off the tap when we don't use it. We ___ save water.



We ___ use animals in our experiments. We ___ harm them.



We ___ pour factory wastes into water resources.



We ___ plant more trees. We need them to breathe.



We ___ use electric cars. Because they are clean.



We ___ turn off the lights when we don't need them.

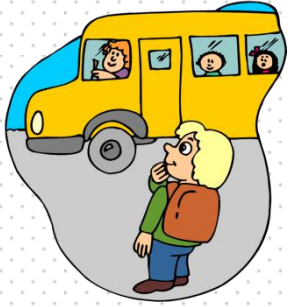


We ___ throw away rubbish. They pollute environment.

SAVE THE WORLD



Look at the pictures, read the sentences and fill in the blanks with "should" or "shouldn't"



We **should** use public transportation more.



We **should** use environment friendly deodorants.



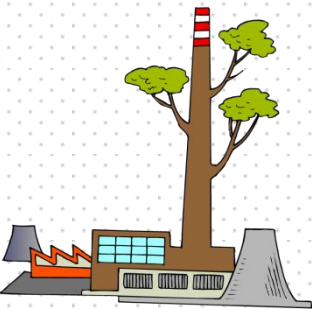
We **shouldn't** cut down the trees. We **should** save them.



We **should** love animals. They are our real friends.



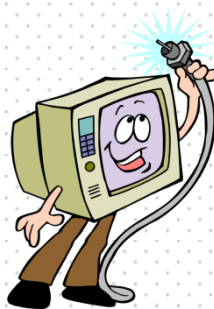
We **shouldn't** use coal in houses. It pollutes air very much.



We **should** use filters in factories. We **shouldn't** pollute the air.



We **shouldn't** hunt animals. We **should** save them. They are our friends.



We **should** turn off electric devices when we don't use them.



We **shouldn't** use our private cars. Because they pollute air much.



We **shouldn't** pour chemicals into our sinks. They pollute water.



We **should** use solar energy more. It's clean and harmless.



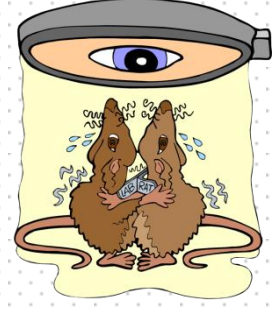
We **should** use environment friendly detergents.



We **shouldn't** waste paper to save our trees. We **should** recycle.



We **should** turn off the tap when we don't use it. We **should** save water.



We **shouldn't** use animals in our experiments. We **shouldn't** harm them.



We **shouldn't** pour factory wastes into water resources.



We **should** plant more trees. We need them to breathe.



We **should** use electric cars. Because they are clean.



We **should** turn off the lights when we don't need them.



We **shouldn't** throw away rubbish. They pollute environment.